

Cozy Yuletide Cottage - Free Christmas Cottage Dishcloth Knitting Pattern



Instruction

Finished Measurements:

27 cm width

18 cm height

Gauge blocked:

24 stitches and 34 rows = 10 cm

Exact gauge is not critical

Yarn:

DK weight yarn

I am using Drops Cotton Merino

Yarn Requirement:

31 g each square

Needles:

4.00 mm or size to obtain gauge

Notes:

Gartner stitch is used to frame the motif; on the RS (right side) and WS (wrong side) all stitches are knit stitches.

When using the chart, read odd Rows (WS) from left to right and even rows (RS) from right to left.

You'll find the chart on the last page of this pattern.

Key:

K Knit stitch

P Purl Stitch

CO Cast on

BO Bind off

Written Pattern:

CO 63 stitches

→ Row 1 [WS]: k 63

← Row 2 [RS]: k 63

→ Row 3 [WS]: k 63

← Row 4 [RS]: k 63

→ Row 5 [WS]: k 3, p 57, k 3

← Row 6 [RS]: k 27, p 9, k 27

→ Row 7 [WS]: k 3, p 25, k 8, p 24, k 3

← Row 8 [RS]: k 26, p 8, k 29

→ Row 9 [WS]: k 3, p 9, k 3, p 14, k 8, p 23, k 3

← Row 10 [RS]: k 26, p 9, k 13, p 3, k 12

→ Row 11 [WS]: k 3, p 5, k 11, p 9, k 8, p 24, k 3

← Row 12 [RS]: k 27, p 7, k 8, p 15, k 6

→ Row 13 [WS]: k 3, p 2, k 17, p 8, k 6, p 24, k 3

← Row 14 [RS]: k 26, p 6, k 10, p 15, k 6

→ Row 15 [WS]: k 3, p 4, k 13, p 4, k 33, p 3, k 3

← Row 16 [RS]: k 6, p 1, k 9, p 2, k 9, p 4, k 7, p 1, k 3, p 15, k 6

→ Row 17 [WS]: k 3, p 4, k 13, p 4, k 1, p 7, k 4, p 9, k 2, p 9, k 1, p 3, k 3

← Row 18 [RS]: k 6, p 1, k 9, p 2, k 9, p 4, k 7, p 1, k 5, p 11, k 8

→ Row 19 [WS]: k 3, p 4, k 13, p 4, k 1, p 7, k 4, p 9, k 2, p 9, k 1, p 3, k 3

← Row 20 [RS]: k 6, p 1, k 9, p 2, k 9, p 4, k 7, p 1, k 5, p 11, k 8

→ Row 21 [WS]: k 3, p 6, k 9, p 6, k 1, p 7, k 4, p 9, k 2, p 3, k 4, p 2, k 1, p 3, k 3

← Row 22 [RS]: k 6, p 1, k 2, p 4, k 3, p 2, k 9, p 4, k 7, p 1, k 5, p 11, k 8

→ Row 23 [WS]: k 3, p 6, k 9, p 6, k 1, p 7, k 4, p 9, k 2, p 3, k 4, p 2, k 1, p 3, k 3

← Row 24 [RS]: k 6, p 1, k 2, p 4, k 3, p 2, k 10, p 2, k 8, p 1, k 7, p 7, k 10

→ Row 25 [WS]: k 3, p 6, k 9, p 6, k 1, p 20, k 2, p 9, k 1, p 3, k 3

← Row 26 [RS]: k 6, p 1, k 9, p 2, k 20, p 1, k 7, p 7, k 10

→ Row 27 [WS]: k 3, p 8, k 5, p 8, k 1, p 2, k 4, p 6, k 4, p 4, k 2, p 9, k 1, p 3, k 3
← Row 28 [RS]: k 6, p 1, k 9, p 2, k 4, p 4, k 6, p 4, k 2, p 1, k 7, p 7, k 10

→ Row 29 [WS]: k 3, p 8, k 5, p 8, k 1, p 2, k 4, p 6, k 4, p 4, k 14, p 1, k 3
← Row 30 [RS]: k 4, p 14, k 4, p 4, k 6, p 4, k 2, p 1, k 9, p 3, k 12

→ Row 31 [WS]: k 3, p 8, k 5, p 8, k 1, p 20, k 13, p 2, k 3
← Row 32 [RS]: k 6, p 13, k 19, p 1, k 9, p 3, k 12

→ Row 33 [WS]: k 3, p 10, k 1, p 10, k 1, p 18, k 13, p 4, k 3
← Row 34 [RS]: k 8, p 13, k 17, p 1, k 24

→ Row 35 [WS]: k 3, p 20, k 2, p 7, k 2, p 7, k 13, p 6, k 3
← Row 36 [RS]: k 10, p 13, k 5, p 4, k 6, p 2, k 23

→ Row 37 [WS]: k 3, p 20, k 3, p 5, k 4, p 4, k 13, p 8, k 3
← Row 38 [RS]: k 12, p 13, k 4, p 2, k 5, p 3, k 24

→ Row 39 [WS]: k 3, p 22, k 3, p 9, k 13, p 10, k 3
← Row 40 [RS]: k 14, p 5, k 1, p 7, k 7, p 3, k 11, p 1, k 5, p 1, k 8

→ Row 41 [WS]: k 3, p 4, k 1, p 1, k 1, p 3, k 1, p 1, k 1, p 11, k 3, p 5, k 7, p 2, k 4, p 12, k 3
← Row 42 [RS]: k 16, p 3, k 2, p 8, k 3, p 3, k 12, p 1, k 2, p 3, k 2, p 1, k 7

→ Row 43 [WS]: k 3, p 5, k 1, p 5, k 1, p 14, k 3, p 1, k 8, p 3, k 2, p 14, k 3
← Row 44 [RS]: k 18, p 1, k 3, p 11, k 15, p 1, k 5, p 1, k 8

→ Row 45 [WS]: k 3, p 4, k 1, p 7, k 1, p 15, k 10, p 3, k 1, p 15, k 3
← Row 46 [RS]: k 18, p 1, k 3, p 9, k 3, p 1, k 5, p 1, k 5, p 1, k 9, p 1, k 6

→ Row 47 [WS]: k 3, p 3, k 4, p 3, k 4, p 4, k 1, p 1, k 1, p 3, k 1, p 1, k 1, p 10, k 1, p 3, k 1, p 15, k 3
← Row 48 [RS]: k 17, p 1, k 5, p 1, k 9, p 1, k 2, p 3, k 2, p 1, k 7, p 1, k 3, p 1, k 9

→ Row 49 [WS]: k 3, p 7, k 1, p 1, k 1, p 9, k 1, p 5, k 1, p 10, k 1, p 5, k 1, p 14, k 3
← Row 50 [RS]: k 18, p 5, k 11, p 1, k 5, p 1, k 10, p 1, k 11

→ Row 51 [WS]: k 3, p 18, k 1, p 7, k 1, p 12, k 3, p 15, k 3
← Row 52 [RS]: k 17, p 3, k 12, p 1, k 9, p 1, k 20

→ Row 53 [WS]: k 3, p 17, k 4, p 3, k 4, p 13, k 3, p 13, k 3
← Row 54 [RS]: k 15, p 3, k 17, p 1, k 3, p 1, k 23

→ Row 55 [WS]: k 3, p 21, k 1, p 1, k 1, p 19, k 3, p 11, k 3

← Row 56 [RS]: k 37, p 1, k 25

→ Row 57 [WS]: k 3, p 57, k 3

← Row 58 [RS]: k 63

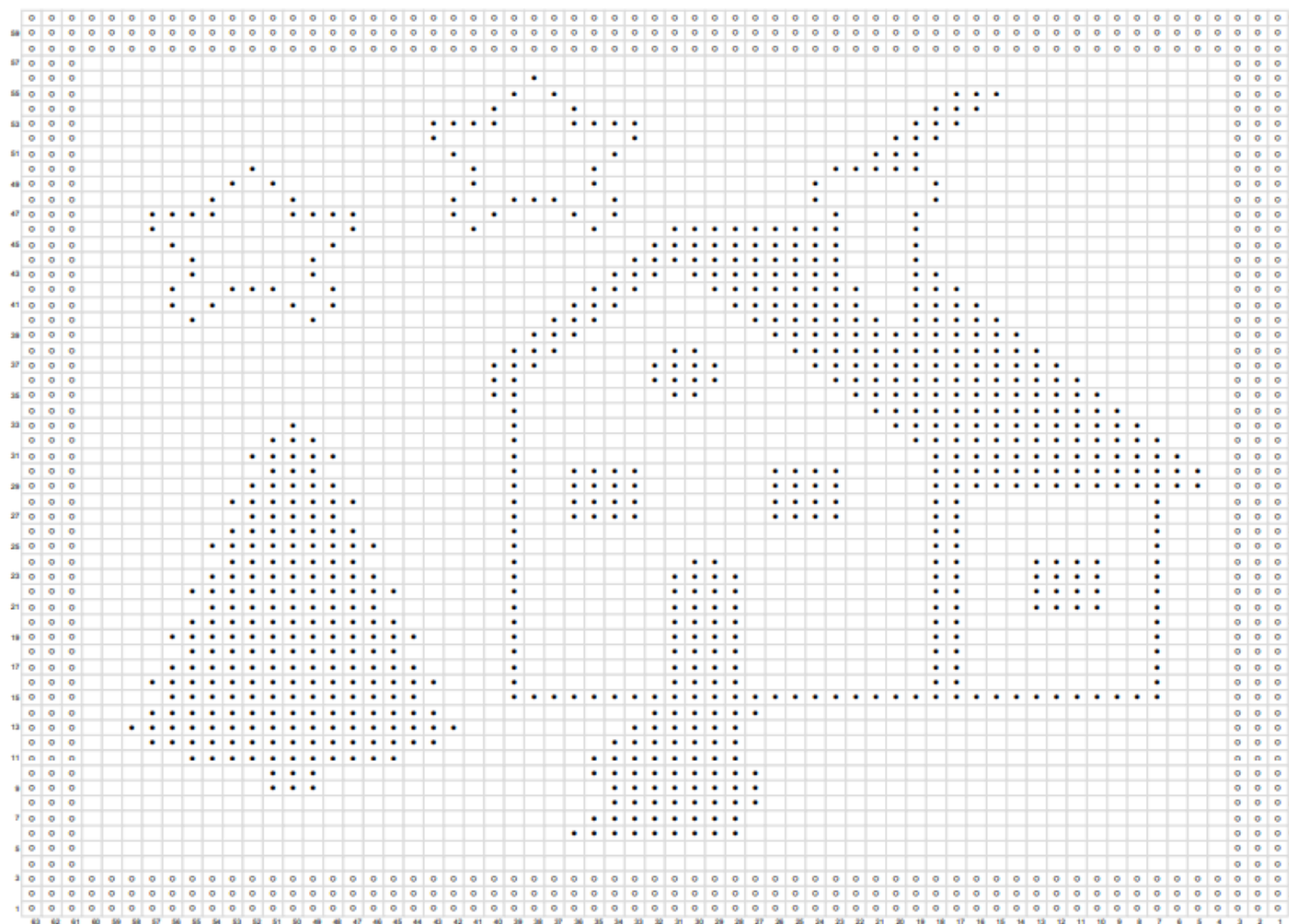
→ Row 59 [WS]: k 63

← Row 60 [RS]: k 63

BO all stitches, weave in all ends, and block the work.

Cast on 63 stitches; Work Rows 1- 60 one time. Bind of all stitches.

- RS: Purl
WS: Knit
- Gartner stitch border
- RS: Knit
WS: Purl



Note:
 This Chart is starting on the wrong side.
 Wrong side rows are read from left to right.
 Right side rows are read from right to left.
 Garter stitch is used to frame the Motif on
 the RS (right side) and WS (wrong side) knit
 all stitches.