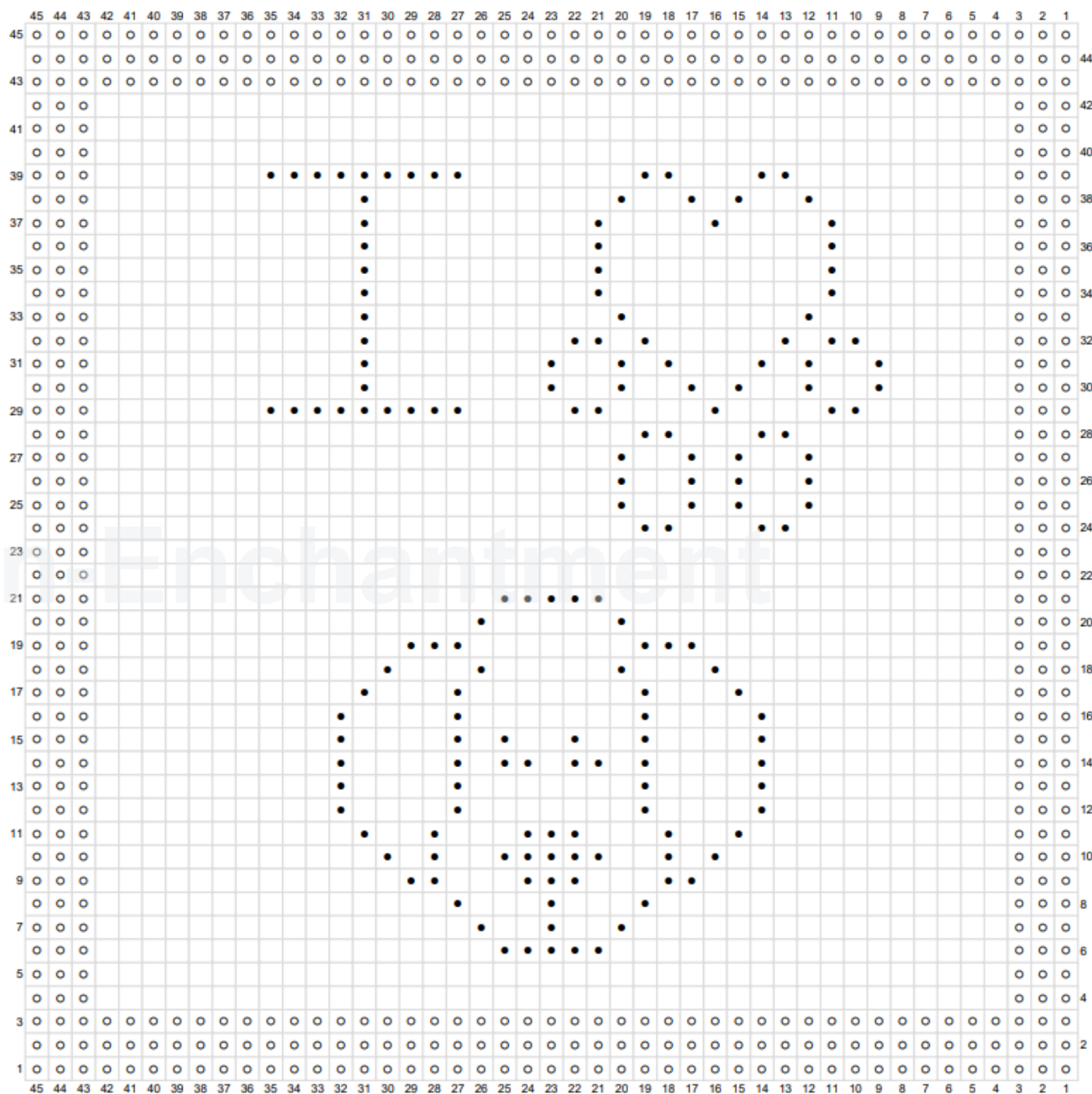


CO 45 stitches; Work Rows 1- 45. Bind off all stitches.

- RS: Knit stitches
WS: Purl stitches
- RS: Purl stitches
WS: Knit stitches
- RS: Knit stitches
WS: Knits stitches

Note:

This Chart is starting on the wrong side.
 Wrong side rows are read from left to right.
 Right side rows are read from right to left.
 Garter stitch is used to frame the Motif on the RS
 (right side) and WS (wrong side) knit all stitches.



@Yarn Enchantment